

## World's Largest Media and Entertainment Company Improves Efficiency of its Projects with IT Governance.

### PROJECT MANAGEMENT HIGHLIGHTS:

- Decreased time required for project tracking by 50 per cent
- Four-week implementation
- Focused on managing project portfolio, resources, and costs

### ADVANTAGES

- An Enterprise wide viewpoint Portfolio management
- Integration of project costs across a portfolio
- Integration with SAP and other line of business applications

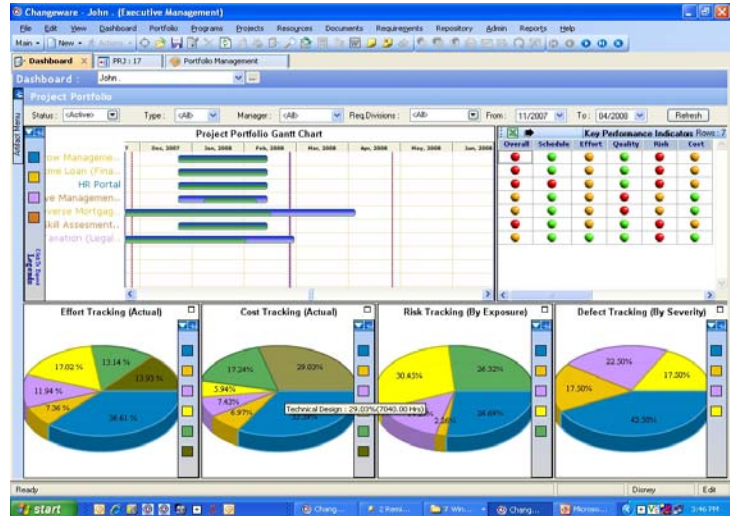
### COMPANY PROFILE

Country: USA

Industry: Media and Entertainment

Revenue (mil): \$ 35,510

Employees: 137,000



*We tested 17 different project management tools but nothing could come close to PPM Studio's user friendly interface and it's robust features & functionalities, we are more than satisfied"*

- Director, PMO

### CLIENT BACKGROUND

Our client one of the world's largest media and entertainment corporations headquartered in Burbank, CA with assets encompassing movies, music, publishing, television, and theme parks.

### BUSINESS PROBLEM

Client's executive team had recognized the need to enhance and formalize many of its project-based processes and so determined to implement a robust portfolio and project management solution.

Their requirement was that PPM solution should be an integral part of a successful strategy to accelerate change in the business and deliver new projects on time and on budget.

Client expects to see improved methodologies, processes, and discipline put into place. They want their IT to work better, and in most cases, they want it to be cheaper.

### SELECTION PROCESS

The company's Project Management Office (PMO) has identified the following selection criteria for their enterprise project management solution.

Project Portfolio Management, Project Planning, Resource Management, Integrated Time Accounting, Document Management, Business Requests (Requirements) Management, Issue Management, Defect Management, Test Management, Source Code Management (SCM) Integration, Collaboration, Financial Management, Service Level, Business Process/ Workflow Management, Interfaces, Security, Application Configurability, Ease of use, Auditing, Deployment/ Implementation, Work Order (Task) Management, Application/ Server Inventory Management

From a list of 17 providers, the company's PMO and cross-functional IT team short listed 5 vendors based on score card. And among the short listed PPM Studio was a clear choice and achieved a business satisfaction score for IT of 4.25 on a 5.0 scale through better

alignment of IT with business objectives. The PPM Studio was selected because of its rich features and robust performance particularly every user was comfortable with its user friendly state-of-the-art user interface.

## SOLUTION

PPM Studio, a resource centric tool that manages the entire spectrum of Project and Portfolio Management was implemented. From commencement to roll out took less than 3 months including POC and only 30 days consultancy was expended. This included training, piloting and roll out. We worked with the customer to fully understand the IT department and the whole business. The tool maps to all organization and this is one of the reasons that it is so simple to implement also it does not require knowledge of any special language or scripting, the tool comes with a large number of reports preloaded and it is easy to customize reports using the many fields available.

## BENEFITS

PPM Studio helped client to establish IT governance across its new product/project development process and some of the other benefits are

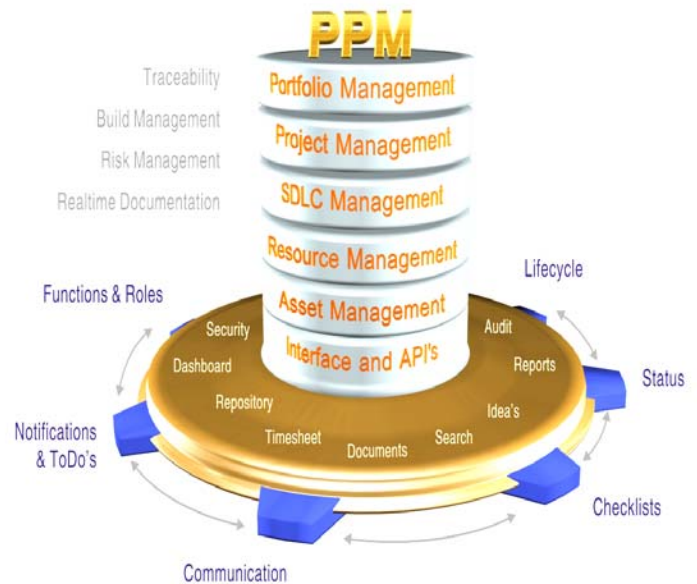
- Improved IT governance -Increased alignment between IT and the business
- Establish financial control via project-based budgeting
- Provide visibility into the new product/ project development and launch process
- PPM Studio's SAP Extension has greatly reduced the cost and risk of maintaining the projects that run on SAP.
- Automated report data-gathering greatly reduces the time and cost of generating reports for all key stakeholders

## PPM STUDIO

PPM Studio is a collaborative, end-to-end, scalable, enterprise solution that helps organizations in managing projects from inception to delivery.

PPM Studio allows organizations to effectively manage the change, gain visibility into internal processes and metrics, increase the operational efficiencies and develop intelligence for better decision-making. It is a customizable framework that facilitates an enterprise to model, broker, deliver and manage its business processes in a unified environment.

Learn more about PPM Studio at [www.ppmstudio.com](http://www.ppmstudio.com)



## PPM STUDIO ADVANTAGES

- Single repository for projects, documents and resources
- Consistent, detailed and easy to create reports
- Deep and robust financial capabilities

## KEY PPM STUDIO FEATURES

- Robust project management functionality
- Resource utilization analysis across projects
- Deep capabilities for managing project financials
- Ease of integration, process definition and configuration

## KEY BUSINESS PROCESSES

- Manage core software development process
- Track and monitor client engagements
- Facilitate offshore resource management

## ABOUT PPM STUDIO

For more information about PPM Studio's solution contact us at

**United States**  
 100 Pacifica Suite 270  
 Irvine CA 92618  
 Phone: (949) 789 7332  
 Fax: (949) 789 7334

**India**  
 Plot #226, Road #17  
 Jubilee Hills, Hyderabad-500033  
 Phone: +91 40 39991999  
 Fax: +91 40 23114651

[sales@semanticspace.com](mailto:sales@semanticspace.com)

[indiasales@semanticspace.com](mailto:indiasales@semanticspace.com)